

EN



## OPERATOR'S MANUAL



# SPARK RESISTANT PUSH BEAM TROLLEY

0.5 TON  
THROUGH  
10 TON

These products  
meet or exceed  
the following  
standards:

**CE**  
**ATEX-GCT**  
(Ex II 2 GD c IIC T4 IIIC T135°C)  
**AS1418.2**  
**ASME B30.11**  
**ASME B30.16**  
(For use with manual or powered hoists)



P.O. Box 845, Winona, MN 55987  
Phone (800) 749-1064  
(507) 474-6250  
Tech Support (507) 457-3346  
Fax (507) 452-5217  
sales@ozliftingproducts.com  
www.ozliftingproducts.com

# Table of Contents

<b>Pg.2</b> .....	<b>Product Features</b>
<b>Pg.3</b> .....	<b>Warranty</b>
<b>Pg.4</b> .....	<b>Important Information and Precautions/Warnings</b>
<b>Pg.5</b> .....	<b>Technical Information/ Pre-Installation</b>
<b>Pg.6</b> .....	<b>Installation/Operation/Maintenance</b>
<b>Pg.7</b> .....	<b>Parts List</b>

## Product Features

The product complies with EU's explosion-proof standard ATEX94/9/EC and the Machinery Directive 2006/42/EC. The company has passed ISO9001, ISO14001, CE/GS, ATEX, LR, CCS and other related certifications. The product explosion-proof label can reach: EX II2 GD c IIIC T135°C. Suitable for: potential explosive atmosphere. Area: Zone 1 & 2 (gas), Zone 21 & 22 (dusk).

- Type EX–GCT Spark Resistant  
Equipped with anti-spark coating, suitable for potential explosive atmospheres.
- Copper plated wheels and lifting ring
- Copper riveted ID Tags
- Fits to most I, S, and W-Beams
- Precision ball bearing trolley wheels
- Anti-drop plate
- Individual test certificate & serial number

**IMPORTANT: It is the responsibility of the user to determine the type of explosion protection area.**

# Warranty

OZ Lifting Products LLC® guarantees these products to be free of defects in materials and workmanship for one year from the date of shipment.

This warranty does not apply to products that show signs of misuse, overloading, alteration, improper maintenance or negligence. The normal wear and tear of moving parts is excluded from the warranty. This warranty does not cover any costs related to removal of these products, lost time, or any other incidental or consequential damages/costs resulting from the claimed defects.

If these products fails during the first year of operating due to defective materials or workmanship, they will be repaired or replaced at the discretion of OZ Lifting Products LLC®. Any product subject to a warranty claim must be returned, prepaid, to an authorized OZ Lifting Products LLC® warranty depot along with proof of purchase. Upon repair, the product will be returned to the customer free of charge. If no defect is found, the customer will be responsible for return shipping costs. The product's warranty will be effective for the remainder of the original warranty period (one year from shipment date).

It is the operator's responsibility to ensure that the product is used in accordance with all applicable local codes, regulations, and safety standards. OZ Lifting Products, LLC assumes no liability for any damages or injuries resulting from the improper use of the product.

OZ Lifting Products LLC® will not be held liable for the following arising from the use of this product: injuries to persons or property, death, incidental, consequential, or contingent damages, whether negligent or deliberate. It is the sole responsibility of the owner to install and operate the product properly and safely.

This is OZ Lifting Products LLC®'s only written warranty. This warranty is in lieu of all other warranties implied by law such as merchantability and fitness. The sale of products from OZ Lifting Products LLC® under any other warranty or guarantee, expressed or implied, is not authorized.

NOTE: OZ Lifting Products LLC® has the right to alter the design of or discontinue the production of any product without prior notice.

**For more information please contact:**



P.O. Box 845, Winona, MN 55987

Phone (800) 749-1064

(507) 474-6250

Tech Support (507) 457-3346

Fax (507) 452-5217

sales@ozliftingproducts.com

[www.ozliftingproducts.com](http://www.ozliftingproducts.com)

# Important Information and Precautions

The information in this manual should be used only for the **Spark Resistant Push Beam Trolley**. This manual contains general instructions dealing with the normal installation, operation, and maintenance of the products described herein. The information provided should not be expected to prepare the user for all possible circumstances.

These products should not be installed, operated, or maintained by any person who has not read all the contents of these instructions. Failure to read and comply with these instructions, warnings, or limitations noted might result in bodily injury, death, or property damage. Contact the distributor for further explanation if information is not fully understood.

It is the responsibility of the owner/user to install, test, maintain, and operate these products in accordance with OSHA, regulations, other federal, state, and local regulations, and ASME standards.

Only trained and qualified personnel shall operate and maintain this equipment.

## Maintain Records

Schedule and maintain records of regular inspection and maintenance of these products. Record the serial number and purchase date of your trolleys on the front cover of this manual to allow for easier referencing.

## Precautions

Do not use these trolleys in conjunction with other equipment unless the system designer, manufacturer, installer, or user has put the necessary safety devices in place. Modifications to upgrade or alter these products should only be authorized by the original manufacturer.

These trolleys should be used for holding loads only within their load ratings..

## Standards: CE, AS1418.2, ASME B30.11, ASME B30.16

**(For use with manual or powered hoists)**

# Warnings

**Failure to read and comply with the following warnings may result in a hazardous situation that could lead to death, serious injury, or property damage.**

**Be sure to properly install, operate, and maintain the trolleys so they do not come off the beam.**

**Do Not** lift more than the rated load.

**Do Not** lift people or lift loads over people.

**Do Not** operate with side or off center loading of load.

**Do Not** operate a damaged or malfunctioning product.

**Do Not** remove, deface, or cover warning labels.

**Do Not** leave a suspended load unattended, unless specific precautions are instituted.

**Do Not** operate until personnel are warned and cleared from the area.

**Do Not** operate if locking nuts are not tight and locked in position.

**Do Not** operate if space washers are not correctly spaced.

**Do Not** operate if end stops are defective and don't restrain the trolley.

**Do Not** use if load is not suspended vertically.

**Do Not** use trolleys as welding ground.

**Do Not** weld on the lifted load.

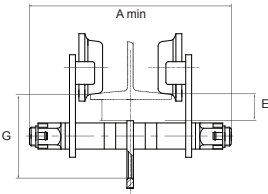
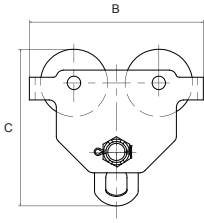
**Do Not** allow the load to swing.

**Do Not** use for any function other than that for which the product is designed.



# Technical Information

## (0.5 – 10 tons)

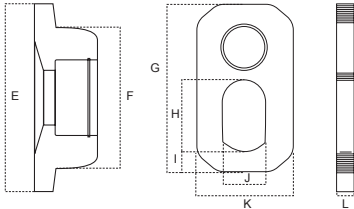


### Specification

PRODUCT CODE	OZSR05PBT	OZSR1PBT	OZSR2PBT	OZSR3PBT	OZSR5PBT	OZSR10PBT	
Safe working load (tons)	.5	1	2	3	5	10	
Minimum radius curve (ft)	2.62	3.28	3.61	4.26	4.59	6.56	
Product dimensions (in)	A min	11.61	12.24	16.89	17.52	17.99	19.29
	B	7.83	9.69	10.87	13.07	14.84	16.69
	C	7.36	8.74	10.34	12.17	13.90	15.59
	G	4.13	4.92	5.91	6.73	7.72	7.48
Max flange thickness (in) E	1.18	1.50	1.50	1.57	1.65	1.77	
Adjustable flange width (in)	1.97-8.00	2.50-8.00	3.64-12.00	3.94-12.00	4.50-12.00	4.88-12.00	
Net weight (lbs)	16	23	42	64	95	196	

### Wheel & Bail dimensions

SIZE	0.5T	1T	2T	3T	5T	10T
E	3.11	3.74	4.25	5.12	5.63	6.93
F	2.17	2.68	3.15	3.94	4.33	5.35
G	3.50	4.02	5.12	6.02	7.24	7.68
H	1.26	1.58	2.05	2.48	2.95	4.72
I	0.57	0.59	0.71	0.87	1.18	1.77
J	0.98	1.18	1.50	1.58	1.97	2.84
K	1.97	2.44	2.95	3.35	4.25	11.42
L	0.24	0.32	0.47	0.55	0.63	0.98



## Pre-Installation

Check for damage during shipment. Do not install or use a damaged product. Contact your OZ Lifting Products LLC® dealer if there are any problems.

Maintain records of all accompanying product information.

### Before initial operation:

**NOTE:** Read and comply with all instructions and warnings furnished with or attached to the product, if applicable.

# Push Beam Trolley Installation

Measure the width of the beam that the trolley will be mounted on. Ensure that the beam is within the adjustable flange width range of the trolley.

Using the provided washers/spacers, assemble an equal number of washers/spacers on each side of the bail to position the sideplates so that there is an 1/8" gap between the flange of each wheel and the beam. The bail must be centered. The extra washers should be placed equally on the outside of the sideplates.

**NOTE:** There must always be at least one washer on both sides of each sideplate.

Once the correct number of washers/spacers are in place, loosen the nuts slightly. This will allow the sideplates to be installed over the beam more easily.

With the sideplates installed onto the beam, firmly tighten the nuts on both sides of the trolley. Secure these nuts with the second locknuts. Ensure that both sets of nuts are tight.

## Operation

### Warnings & Precautions

Trolley operators should read and fully comprehend this entire manual and all warnings on the trolleys before beginning operation. If this manual is not read and followed completely, injuries may occur.

### Operator Requirements:

- Be trained in proper trolley operation and in dealing with potential malfunctions.
- Abstain from use of alcohol, medications, or drugs while operating.
- Avoid operation while tired or distracted.
- Avoid operation if they have a history of seizures or other medical issues that may interfere with operation.
- Have proper coordination and vision.

**NOTE:** Prior to operation, ensure trolley is in proper working condition and maintenance records are up to date.

### Operation

Be aware of trolley load capacity and don't overload.  
Attach load to suspension plate directly under the trolley.

## Maintenance

### Inspection

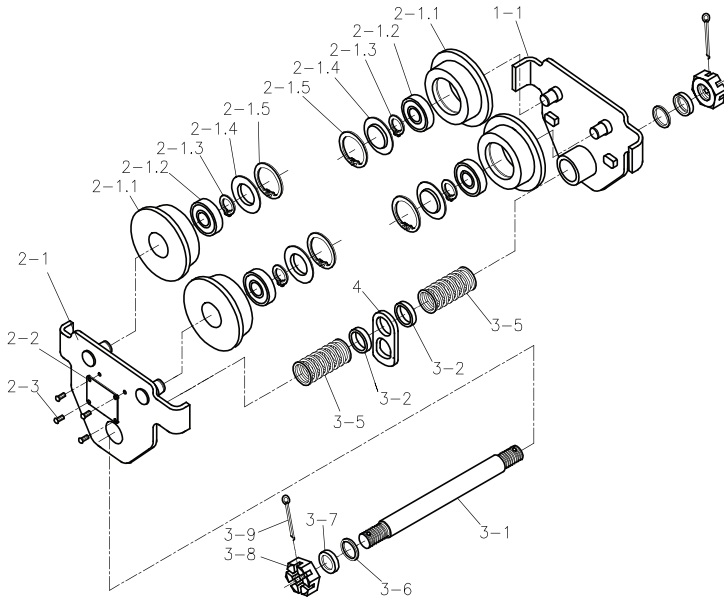
Operators should visually inspect the trolleys on a regular basis. Observe for wear, damage, cuts, cracks, or corrosion. If any problems are observed, the trolleys should be placed out of service until they can be repaired. Use only OZ Lifting Products LLC® for replacement parts.

Complete a monthly inspection of the suspension plate, track wheel, and locking nuts. Ensure that locking nuts are secure.

Trolleys should be taken to an authorized repair center for professional inspection once a year.

# Parts List

(0.5 ton – 10 ton)



No.	BEAM TROLLEY PARTS
1-1	Right plate assy.
2-1	Left plate assy.
2-1.1	Driving wheel
2-1.2	Ball bearing
2-1.3	Snap ring
2-1.4	Bearing cover
2-1.5	Snap ring
2-2	Name plate
2-3	Rivet
3-1	Hanger Shaft
3-2	Short bushig
3-3	Bushing
3-5	Adjusting washer
3-6	Thin adjusting washer
3-7	Step washer
3-8	Castle nut
3-9	Split pin
4	Hanger plate







Scan to access translated versions  
of this manual on our website.  
Escanee para acceder a las versiones  
traducidas de este manual en nuestro sitio web.  
Scannez pour accéder aux versions  
traduites de ce manuel sur notre site Web.



P.O. Box 845, Winona, MN 55987  
Phone (800) 749-1064  
(507) 474-6250  
Tech Support (507) 457-3346  
Fax (507) 452-5217  
sales@ozliftingproducts.com  
**www.ozliftingproducts.com**