



WHEEL BASE

Please read the
Operator's Manual
carefully before
operating this product.
Keep this manual
nearby at all times.



P.O. Box 845, Winona, MN 55987
Phone (800) 749-1064
(507) 474-6250
Tech Support (507) 457-3346
Fax (507) 452-5217
sales@ozliftingproducts.com

TABLE OF CONTENTS

SAFETY	3
General Safety Information	3
Guidelines	3
Safety Symbols	3
Safety Precautions	4
Safety Warnings	5
Safety Labels	6
Label Identification	6
Danger Safety Labels	6
Warning Safety Labels	7
Caution Safety Labels	9
INTRODUCTION	10
Machine Information And Locations	10
Owner Information	10
ID Plate	11
QR Code Location	11
OPERATION	12
Wheel Base Components	12
Assembling The Wheel Base	13
Crane Pre-Installation	16
Assembling The Crane	17
Installing A Pedestal Base To A Wheel Base	17
Installing The Cable	17
Installing The Crane Onto The Wheel Base	18
Adjusting the Leg Extensions	19
Installing The Wheel Base To The Ground	20
Preparing For Operation	21
Warnings & Precautions	21
Operating Guidelines	22
Attaching The Load	22
Moving The Load	23
SPECIFICATIONS	24
MAINTENANCE	30
Maintenance Safety	30
Lubrication	31
General Lubrication Guide	31
Cleaning	31
Light Wash Down	31
Inspecting The Wheel Base	32
Definitions	32
Inspection Classifications	32
Important Inspection Notes	32
General Inspection Chart	33
Repairs	33
TROUBLESHOOTING CHART	34
OZ LIFTING PRODUCTS TWO YEAR WARRANTY	35
This Warranty Does NOT Cover:	35
Warranty Disclaimers/Limitations:	35
MAINTENANCE RECORD	36

SAFETY

General Safety Information

Guidelines

This general safety information serves as a guide to correctly operate OZ Lifting Products, LLC®. Anyone operating this equipment must read and understand all of the manuals that are included with OZ Lifting Products, LLC®.

Safety Symbols

The words DANGER, WARNING, CAUTION are used throughout the safety messages and decals in the manual or on the equipment. Statements with one of these words indicates a safety risk is involved. Be sure to observe the precautions indicated whenever a Safety Alert Symbol is present.



Safety Alert Symbol

This symbol is used to call attention to instructions concerning personal safety. Be sure to observe and follow these instructions. Take time to be careful!



DANGER

The signal word **DANGER** on the equipment and in the manual identifies a hazardous situation which, if not avoided, **WILL** result in death or serious injury.



WARNING

The signal word **WARNING** on the equipment and in the manual indicates a potentially hazardous situation which, if not avoided, **COULD** result in death or serious injury.



CAUTION

The signal word **CAUTION** on the equipment and in the manual indicates a potentially hazardous situation which, if not avoided, **MAY** result in minor or moderate injury. It may also be used to alert against unsafe practices.

IMPORTANT

This notice identifies procedures which must be followed to avoid damage to the equipment.

Safety Precautions

The information in this manual applies to Davit Cranes and the Wheel Base by OZ Lifting Products, LLC®.

This manual contains general instructions for normal installation, operation, and maintenance of the product described herein. The information provided should not be expected to prepare the user for all possible circumstances.

This product should not be installed, operated, or maintained by any person who has not read all the contents of this manual. Failure to read and comply with these instructions, warnings, or limitations may result in bodily injury, death, or property damage.

It is the responsibility of the owner/user to install, test, maintain, and operate this product in accordance with OSHA regulations as well as all other federal, state, and local regulations. Only trained and qualified personnel shall operate and maintain this product.

Regularly inspect the Wheel Base by OZ Lifting Products, LLC® for signs of wear, elongation of holes, surface cracks, gouges, damage or any abnormal conditions.

Product owners should schedule and keep record of regular inspection and maintenance performed. There is a maintenance chart included in the back of this book. Record your Wheel Base by OZ Lifting Products, LLC® serial number and purchase date in this manual for reference.

Do not use the Wheel Base by OZ Lifting Products, LLC® in conjunction with other equipment unless the necessary safety devices are in place. Modifications to this product is only authorized by the original manufacturer.

Safety Warnings

Failure to read and comply with the following warnings may result in a hazardous situation that could lead to death, serious injury, or property damage. Keep this manual near the equipment at all times. Do not remove, alter, or obscure the labels attached to the winch. Contact OZ Lifting Products, LLC® for replacement manuals and labels.



WARNING

Failure to read and comply with the following warnings may result in a hazardous situation that could lead to death, serious injury, or property damage.

- DO NOT** operate a damaged or malfunctioning product.
- DO NOT** lift more than the rated load of the crane or its attached components.
- DO NOT** use additional cranes to move a load that is heavier than the load rating of any single crane in use.
- DO NOT** modify this product in any way.
- DO NOT** use for other functions except those for which this product is intended.
- DO NOT** remove, deface, or obscure warning labels.
- DO NOT** allow load to swing or jerk. Operate smoothly to avoid shock loads.
- DO NOT** lift any load that is not located directly below the crane. This product is not intended to drag a load sideways.
- DO NOT** wrap the load with the wire rope. Use only a sling or another manufacturer-approved device.
- DO NOT** operate without at least four (4) anchor wraps of wire rope around the winch drum.
- DO NOT** operate without assuring wire rope is securely attached to the winch drum.
- DO NOT** operate without checking for proper lubrication.
- DO NOT** put hands in areas with moving parts such as sheaves, wire ropes, and gears.
- DO NOT** lift people.
- DO NOT** lift loads over people.
- DO NOT** operate until personnel are warned of approaching loads and are cleared from the area.
- DO NOT** leave a suspended load unattended.
- DO NOT** substitute smaller diameter pins. Use only the pins supplied with the crane.
- DO NOT** use chains, cables, or rigid devices to lift crane. Nylon or other synthetic slings should be used instead.
- DO NOT** use on unlevel or uneven ground.

SAFETY

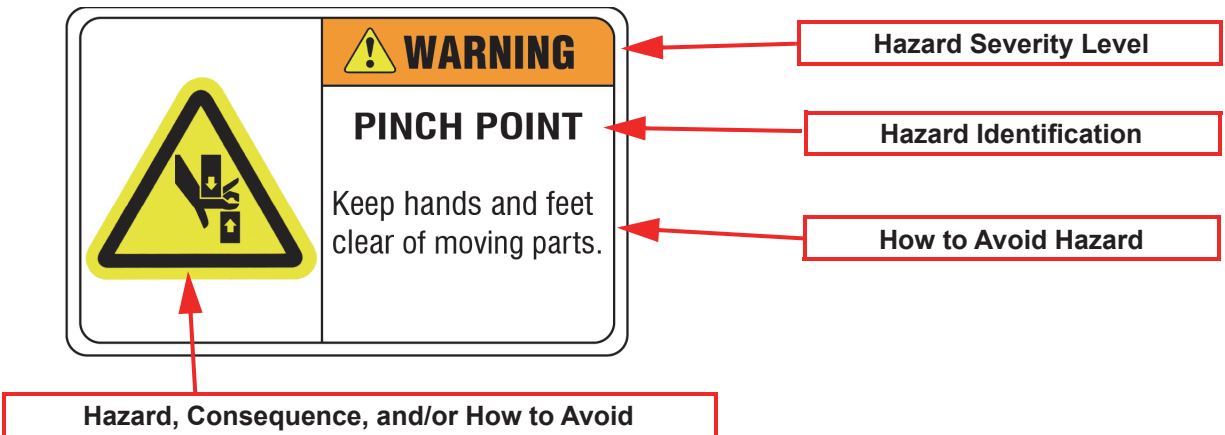
Safety Labels

Label Identification

Safety labels are placed on the equipment to protect anyone working on or around this equipment, as well as the components of the equipment. All personnel operating or maintaining this equipment must familiarize themselves with the safety labels.

The safety labels are color coded to warn the operator of the various levels of machine hazards. The safety label example below defines a standard industry label.

Make sure all safety labels are in place and clearly readable. Replace any damaged or missing safety labels with a factory replacement label.



Danger Safety Labels



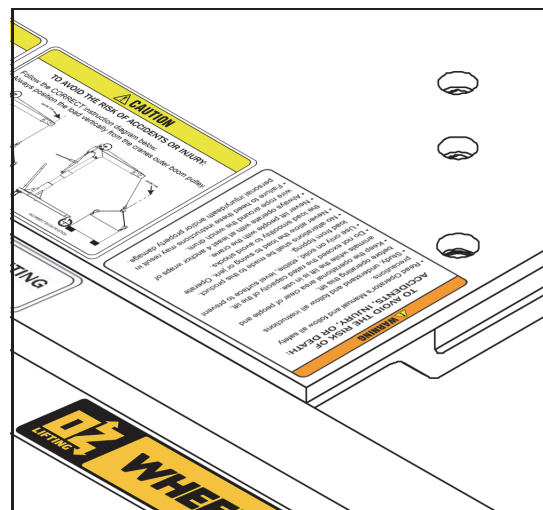
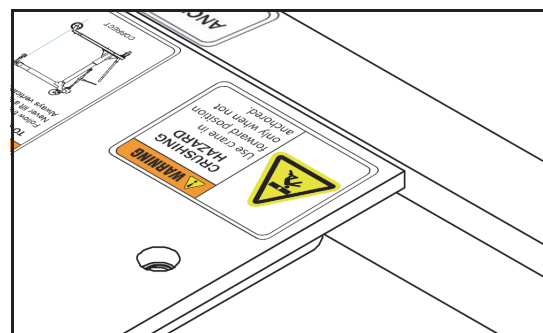
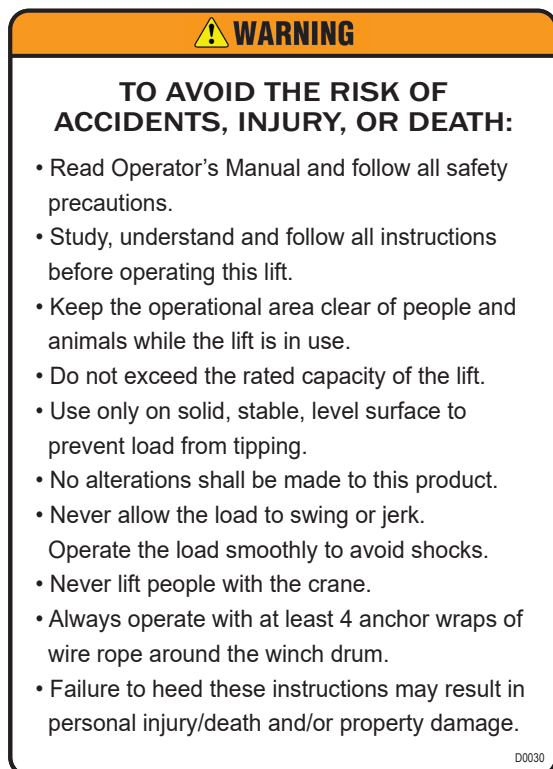
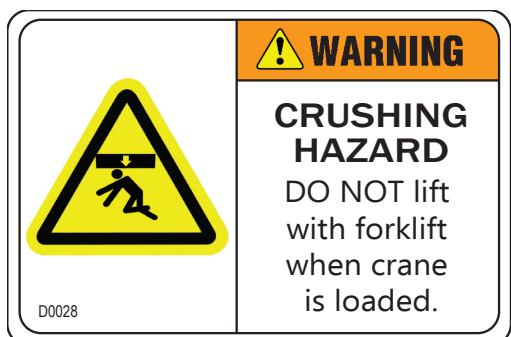
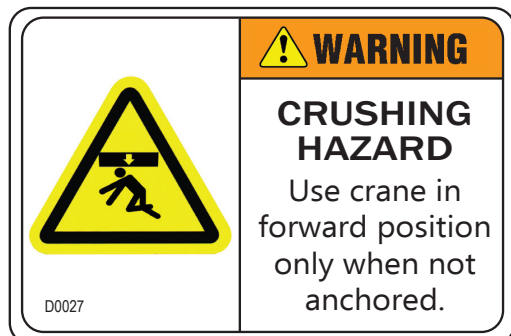
The signal word **DANGER** on the equipment and in the manual identifies a hazardous situation which, if not avoided, **WILL** result in death or serious injury.

Warning Safety Labels



WARNING

The signal word **WARNING** on the equipment and in the manual indicates a potentially hazardous situation which, if not avoided, **COULD** result in death or serious injury.

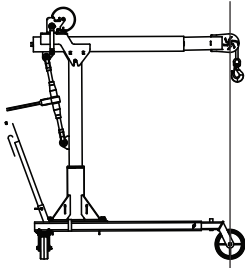


SAFETY

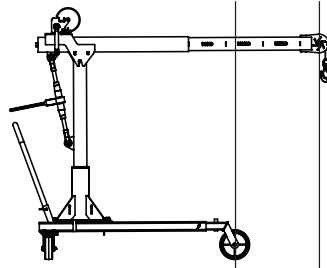
WARNING

TO AVOID THE RISK OF ACCIDENTS, INJURY, OR DEATH:

Follow the **CORRECT** instruction diagram below.
Never lift a load with the boom arm extended past the front wheels.
Always vertically align the front leg wheels to the boom wheel.

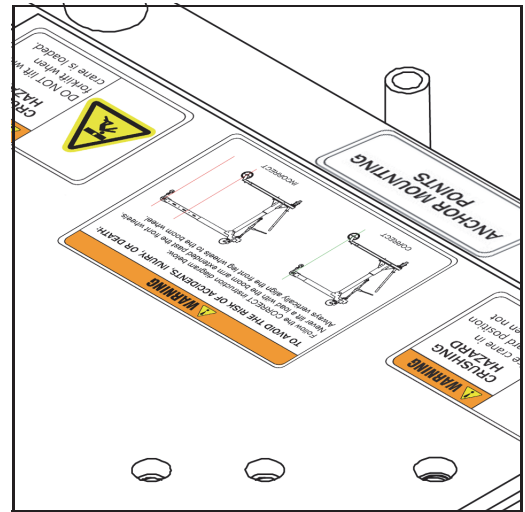


CORRECT



INCORRECT

D0029



Caution Safety Labels



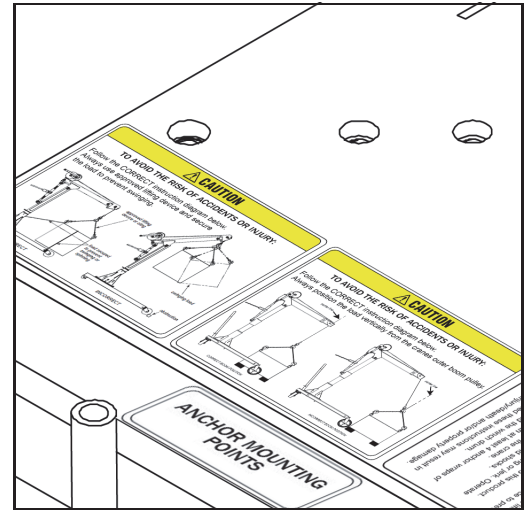
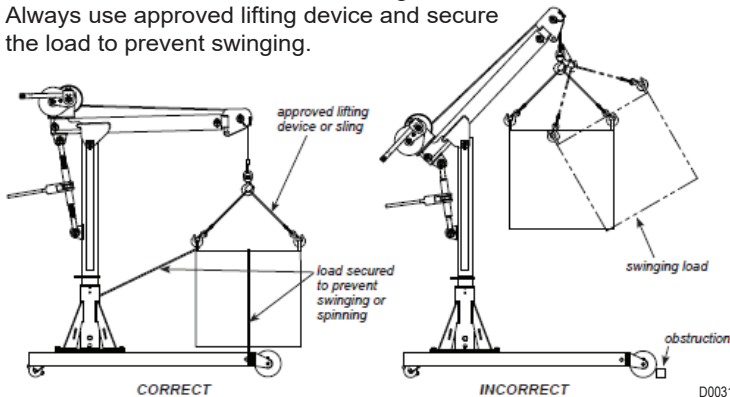
CAUTION

The signal word **CAUTION** on the equipment and in the manual indicates a potentially hazardous situation which, if not avoided, **MAY** result in minor or moderate injury. It may also be used to alert against unsafe practices.

CAUTION

TO AVOID THE RISK OF ACCIDENTS OR INJURY:

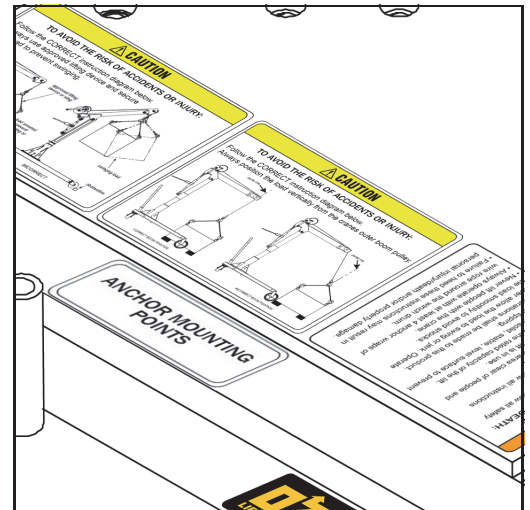
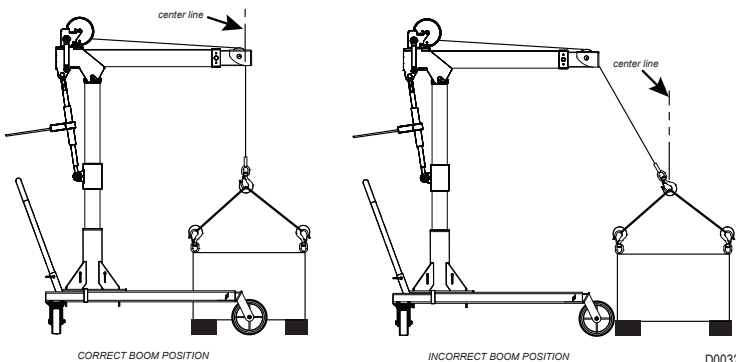
Follow the **CORRECT** instruction diagram below.
Always use approved lifting device and secure the load to prevent swinging.



CAUTION

TO AVOID THE RISK OF ACCIDENTS OR INJURY:

Follow the **CORRECT** instruction diagram below.
Always position the load vertically from the crane's outer boom pulley.



INTRODUCTION

Machine Information And Locations

Owner Information

Thank you for your decision to purchase OZ Lifting Products, LLC®. To ensure maximum performance of your equipment, it is mandatory that you thoroughly study the Operator's Manual and follow the recommendations. Proper operation and maintenance are essential to maximize equipment life and prevent personal injury.

The purpose of this manual is to familiarize and instruct the operator.

Safety is of primary importance to the owner/operator and to the manufacturer. The first section of this manual includes a list of Safety Messages that, if followed, will help protect the operator and bystanders from injury or death. Many of the Safety Messages will be repeated throughout the manual. The owner/operator should know these Safety Messages and be aware of the hazards of operating and maintaining this equipment. Operate and maintain this equipment in a safe manner and in accordance with all applicable local, state, and federal codes, regulations and / or laws. Follow all on product labeling and instructions.

Make sure that all personnel have read this Operator's Manual and thoroughly understand safe and correct operating, installation and maintenance procedures.

OZ Lifting Products, LLC® is continually working to improve its products. OZ Lifting Products, LLC® reserves the right to make any improvements or changes as deemed practical and possible without incurring any responsibility or obligation to make any changes or additions to equipment sold previously.

Although great care has been taken to ensure the accuracy of this publication, OZ Lifting Products, LLC® makes no warranty or guarantee of any kind, written or expressed, implied or otherwise with regard to the information contained within this manual. OZ Lifting Products, LLC® assumes no responsibility for any errors that may appear in this manual and shall not be liable under any circumstances for incidental, consequential or punitive damages in connection with, or arising from the use of this manual.

Keep this manual available for frequent reference. All new operators or owners must review the manual before using the equipment and annually thereafter. Contact OZ Lifting Products, LLC® for assistance, information, or additional copies of the manual. See our website www.ozliftingproducts.com or call (800) 749-1064.

P.O. Box 845, Winona, MN 55987

Phone: (800) 749-1064

(507) 474-6250

Tech Support: (507) 457-3346

Fax: (507) 452-5217

sales@ozliftingproducts.com

ID Plate

Please record your OZ Lifting Products, LLC® information in the spaces provided below for future reference.



Model Number: _____

Serial Number: _____

Date of Purchase: _____

Always use the model number and serial number when requesting information or when ordering parts.

QR Code Location

Use your mobile device to scan the QR Code. The mobile device will then navigate to the OZ Lifting Products, LLC® website.



OPERATION

Wheel Base Components

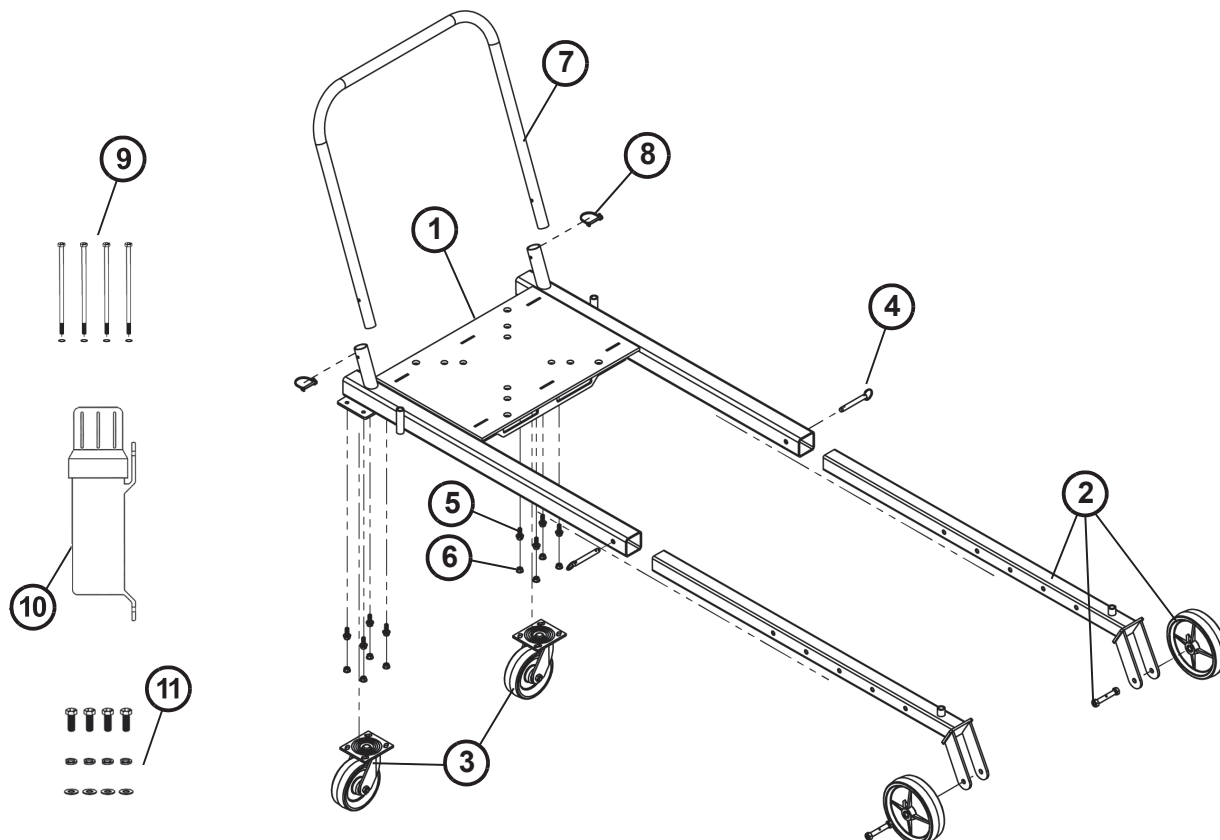


Figure 1

ITEM	PART NUMBER	DESCRIPTION	QTY
1	OZ110029	Large Frame Weldment	1
2	OZ100004	Telescoping Leg/Wheel Assembly	2
3	OZ240013	Locking Swivel Caster Wheel	2
4	OZ240012	Detent Pin With Pull Ring	2
5	OZ240011	Flange Bolt	8
6	OZ240010	Flange Nut	8
7	OZ210014	Push Handle	1
8	OZ240014	Wire Lock Pin	2
9	OZ100027	Floor-Anchor Mounting Bolt Kit	1
10	OZTB1	Toolbox Storage Tube	1
11	OZWBKIT	Pedestal Base Bolt Kit	1

Wheel Base includes pedestal base (shown on pg. 17) and hardware kit, floor-anchor mounting bolt kit, davit crane locking collar (shown on pg. 18), and toolbox storage tube (excluding model #OZWB). OZWB includes base hardware kit, floor-anchor mounting bolt kit, and toolbox storage tube; required pedestal base and locking collar sold separately. Davit crane sold separately from all models. Dimensions and illustrations are for reference only and subject to change without notice.

Assembling The Wheel Base

NOTE: Study the *Wheel Base components Illustration (Figure 1)* on page 12 to familiarize yourself with the *Wheel Base components and how they are assembled.*

1. Install the two front caster wheels (Item 1) to the telescoping legs (Item 2) with the greaseable bolts and nuts provided (Item 3). Torque the nuts to thirty (30) foot-pounds.

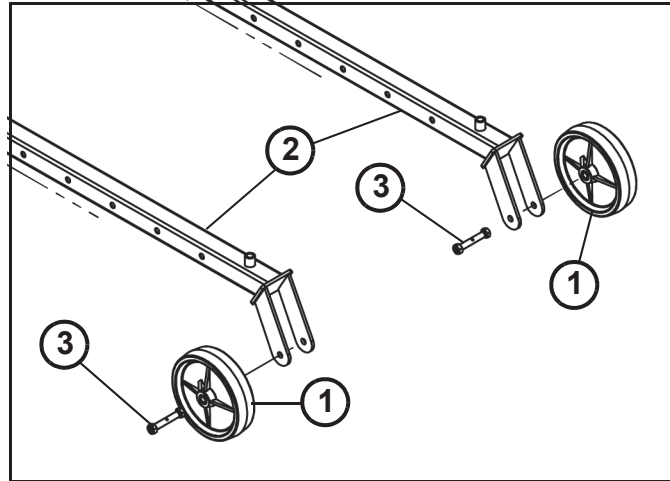


Figure 2

2. Install the two telescoping leg/wheel assemblies (Item 1) into the large frame weldment (Item 2)

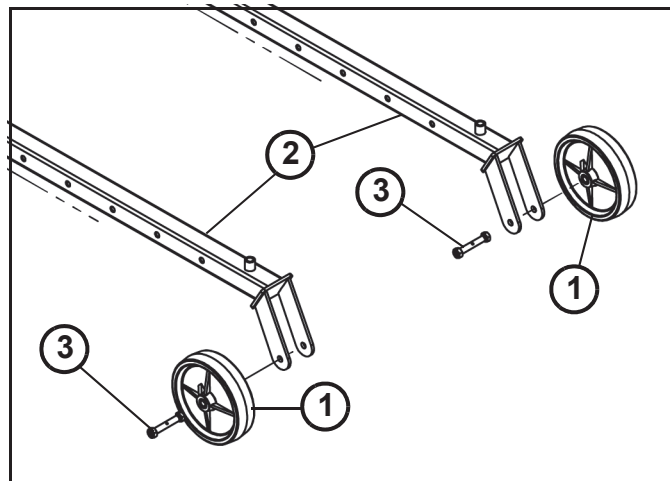


Figure 3

OPERATION

3. Install the two detent pins with pull rings (Item 1) to secure the two telescoping leg/wheel assemblies (Item 2).

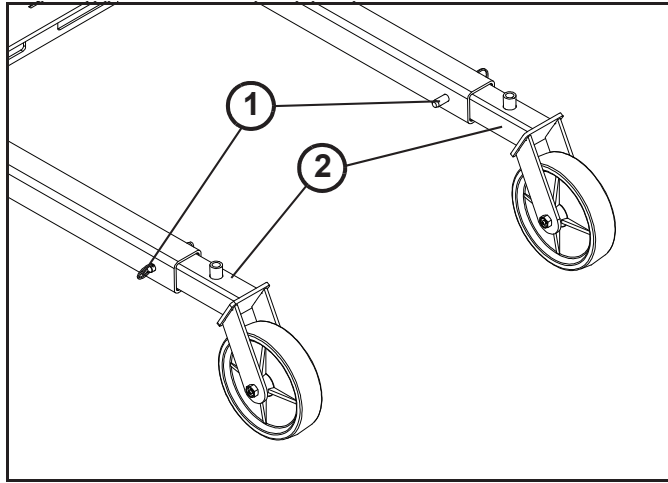


Figure 4

4. Install the two rear locking swivel caster wheels (Item 1) and secure with the supplied flange bolts (Item 2) and nuts (Item 3). Torque the nuts to twenty-three (23) foot-pounds.

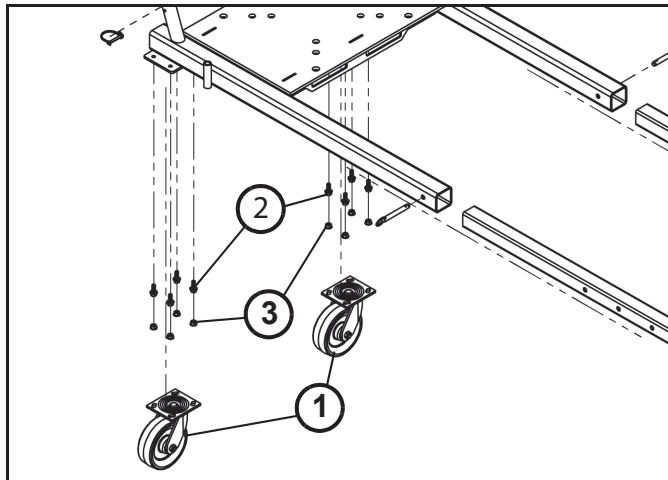


Figure 5

5. Install the push handle (Item 1) and secure with the two supplied wire lock pins (Item 2).

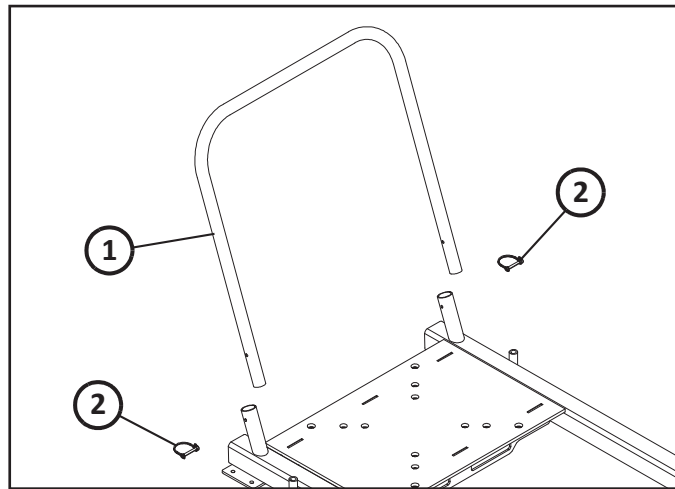


Figure 6

(Optional) 6. For added convenience, an optional toolbox storage tube is included. This toolbox is molded from high-density polypropylene, is corrosion and heat-resistant, with a screw-cap and latch. Select a mounting location that is easily accessible and secure using the four included zip ties. The toolbox is designed to accommodate the floor-anchor mounting bolt kit, operator's manual, and other tools as needed.

NOTE: *The toolbox storage tube is an optional accessory and can be omitted if desired.*

Crane Pre-Installation

Check for damage during shipment. Do not install or use a damaged product. Be sure to maintain records of product information and contact your OZ Lifting Products, LLC® dealer with any problems that arise. Refer to applicable codes and regulations before installing equipment. Contact a qualified professional to obtain structure and foundation specifications for product mounting.

Before installing, select a location where the crane is:

- Visible throughout its entire operation.
- Free of traffic and any possible operational interference.
- Positioned so the operator is clear of both the load and the path of the wire cable.
- Accessible for maintenance.
- On a strong, level foundation, that can properly support it under all conditions.
- Removed from any corrosive, flammable, explosive, or potentially damaging materials.

Inspect the crane to assure there are no missing or damaged parts. Do not discard the crane's shipping containers as they can be reused if the crane needs to be repackaged. Contact your OZ Lifting Products, LLC® dealer if any problems arise.

Assure that all components, including the pin that the load sheave rides on, are properly lubricated before assembling. Refer to Cleaning & Lubricating the Crane Instructions on page 31.

During assembly, perform an inspection of all components and resolve any issues. This will provide a benchmark comparison for later inspections.

Assembling The Crane

Please refer to your crane Operator's Manual for assembly of the crane.

Installing A Pedestal Base To A Wheel Base

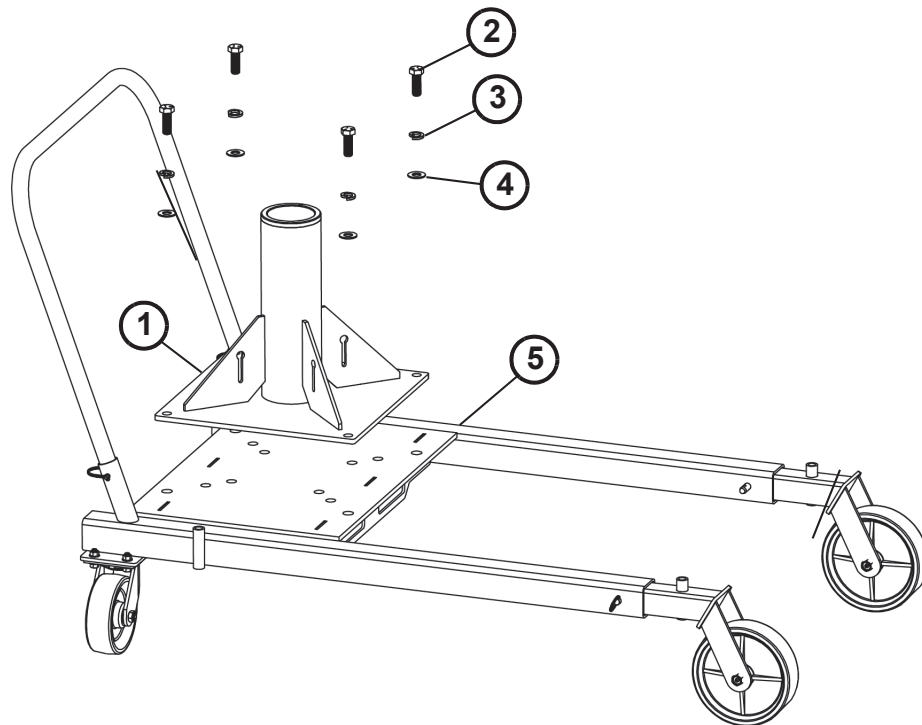


Figure 7

NOTE: The accompanying bases and locking collars for the OZ Lifting Products, LLC® davit cranes are sold separately through OZ Lifting Products, LLC® dealers. They are required for proper operation of this product.

1. Install the pedestal base (Item 1) to the Wheel Base (Item 5) using 1/2-13 grade 5 coarse thread bolts (Item 2), lock washers (Item 3), and flat washers (Item 4). A torque of 80 ft/lb should be used for grade 5 fasteners without lubrication.

Non-standard products that have been changed from the original design may have other fastening requirements. Contact your OZ Lifting Products, LLC® dealer for more information.

Installing The Cable

Please refer to your crane Operator's Manual for assembly of the crane.

Installing The Crane Onto The Wheel Base

NOTE: *Installing the tab into the slot on the pedestal base bracket secures the mast to the base to prevent the crane from rotating and possibly tipping under load.*

1. Assemble the crane with the instructions in the crane operator's manual.
2. Once the crane assembly is complete, install the crane into the pedestal base on the Wheel Base. The crane can also be assembled as individual parts onto the Wheel Base if it has not been previously assembled.
3. Make sure the crane boom and the Wheel Base legs are parallel to each other.
4. Install the locking collar system by inserting the U-bolts provided around the tubes of the mast and pedestal base.
5. Place the locking collar with the movable tab onto the mast of the crane and torque to twenty (20) foot-pounds.
6. Place the other locking collar onto the pedestal base tube and torque to twenty (20) foot-pounds.
7. Make sure both locking collars align and tab can lock into the mating slot when the crane is facing forward with the lifting hook between the Wheel Base legs.
8. Center the load low between the two front wheels of the Wheel Base.

WARNING

Failure to install the tab into the slot on the pedestal base bracket may result in the crane tipping under load.

NOTE: *Locking collar sold separately. Locking collar must be used at all times when Wheel Base is not securely anchored to the floor.*

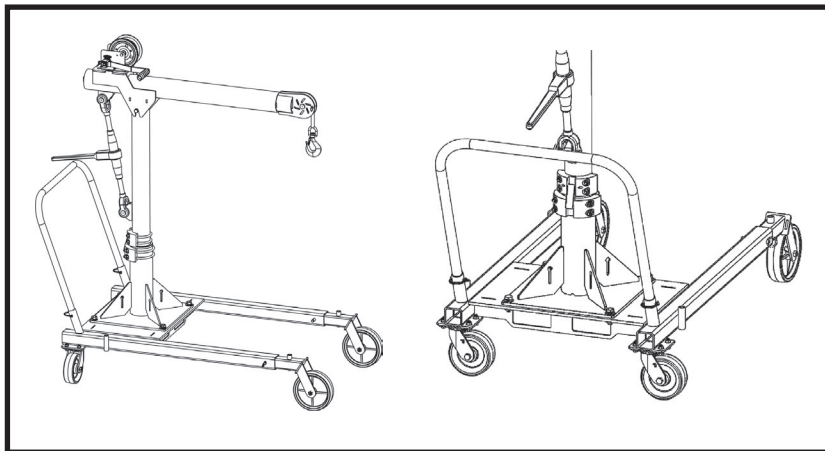


Figure 8.1

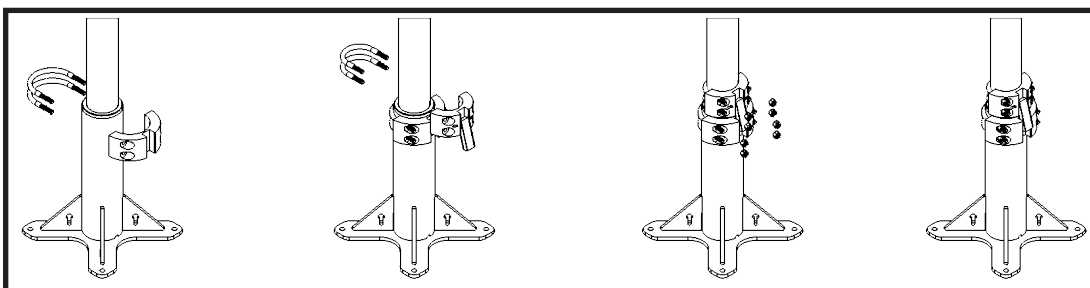


Figure 8.2

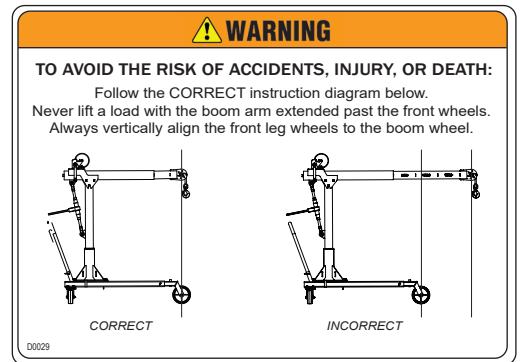
Adjusting the Leg Extensions

NOTE: *It is highly recommended that BOTH leg extensions are extended the same amount.*

1. Lift outer leg slightly to relieve the ball detent pin.
2. Pull the ball detent pin out of the wheel base leg.
3. Slide leg extension out to desired position.

NOTE: *If NOT using the anchor system, the front wheels MUST be past the load.*

4. Push the ball detent pin through the entire outer leg.

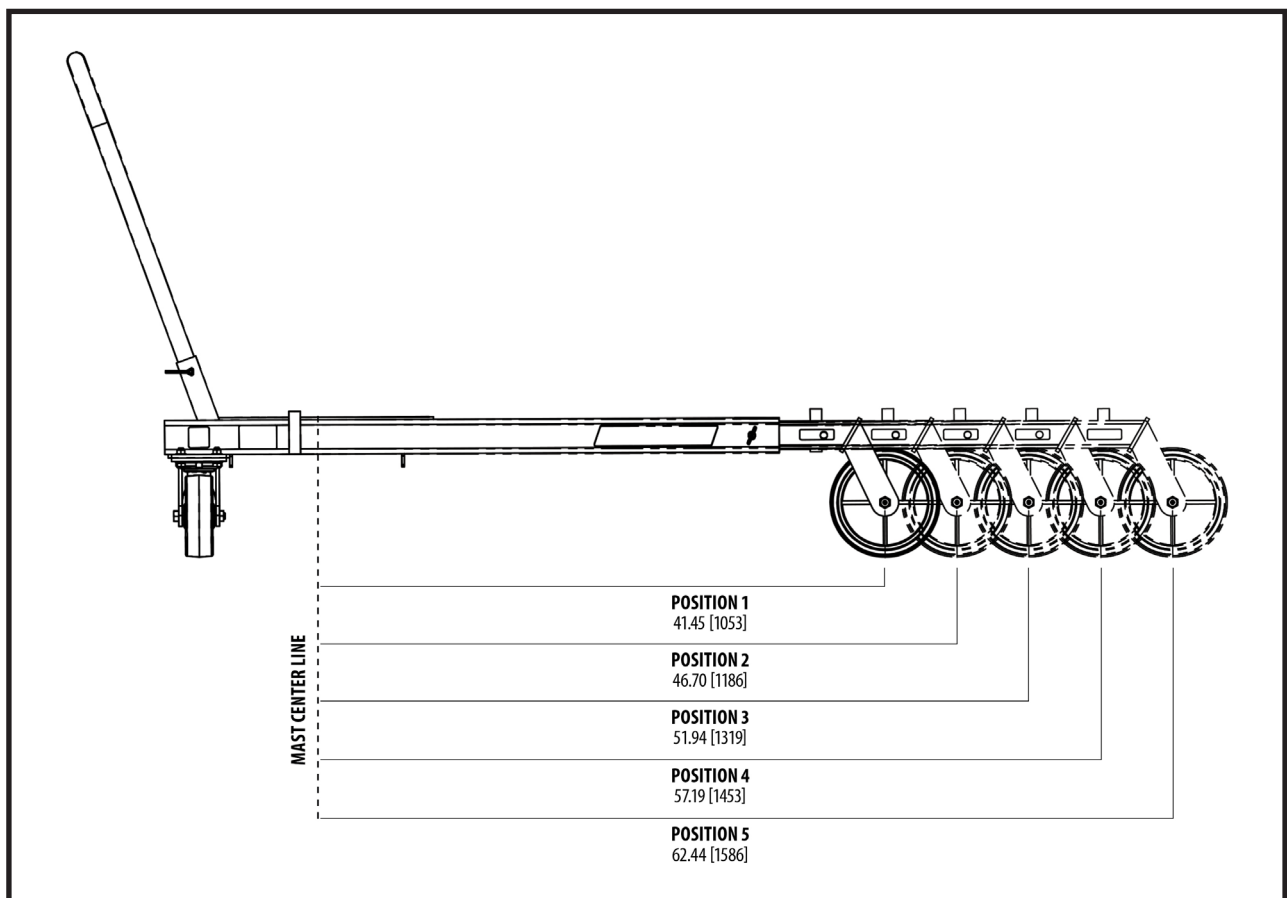


WARNING

Failure to install the tab into the slot on the pedestal base bracket may result in the crane tipping under load.

CAUTION

Factory supplied wheel base mounting bolts to be used for floor-mounting with anchors only.



Dimensional values are provided in inches. Bracketed values [] within diagram represent equivalent measurements in millimeters for informational purposes only.

Figure 9

OPERATION

Installing The Wheel Base To The Ground

NOTE: *Installing the tab into the slot on the pedestal base bracket secures the mast to the base to prevent the crane from rotating and possibly tipping under load.*

1. Ensure there is a level foundation that can properly support Wheel Base under all conditions.
2. Assemble the Wheel Base according to instructions previously stated in this manual.
3. Install anchors to the surface that Wheel Base will mount to, at the location desired. Use Figure 10.1 for measurements.

NOTE: 1/2"-13 Grade 5 is the recommended bolt size to mount the Wheel Base.

4. Move Wheel Base into position where it is to be anchored.
5. Install four (4) supplied bolts and four (4) washers through the anchor point tubes and torque to twenty (20) foot-pounds. See Figure 10.2.

WARNING

Failure to install the tab into the slot on the pedestal base bracket may result in the crane tipping under load.

CAUTION

Factory supplied wheel base mounting bolts and washers to be used for floor-mounting with anchors only.

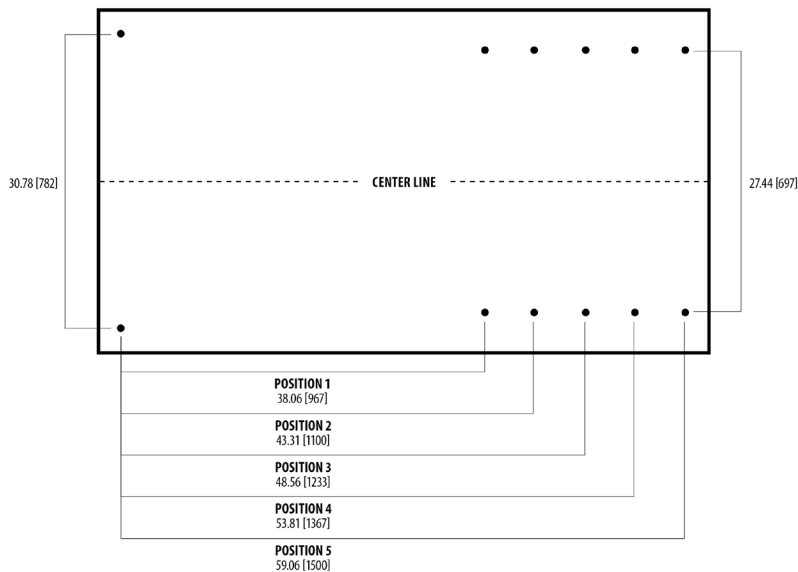


Figure 10.1

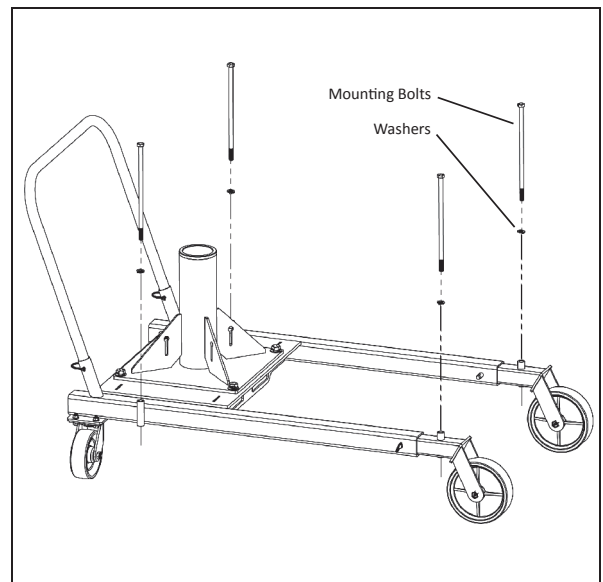


Figure 10.2

Dimensional values are provided in inches. Bracketed values [] within diagram represent equivalent measurements in millimeters for informational purposes only.

Preparing For Operation

Warnings & Precautions



WARNING

Failure to read and comply with the following warnings may result in a hazardous situation that could lead to death, serious injury, or property damage.

Operators should read and fully comprehend this entire manual and all warnings on the OZ Lifting Products, LLC® crane before beginning crane operation. If this manual is not read and followed completely, injuries and damage may occur. For questions regarding operation, please contact your OZ Lifting Products, LLC® dealer.

Before operating the crane, be sure all parts are clean and properly lubricated. The crane must be in proper working condition and maintenance records must be up to date to proceed with operation. The area of operation must be clear of all flammable materials.

It is important to maintain secure footing while operating the crane. Confirm that the crane is attached securely to a strong, level, solid foundation before operation. Slowly take up a load, verifying that it is well supported and balanced before proceeding with operation.

All operators MUST:

- Be trained in proper crane operation and in dealing with potential malfunctions.
- Abstain from use of alcohol, medications, or drugs while operating.
- Be sure to have proper coordination and vision, and avoid operation while tired or distracted.
- Inspect the system components.
- Know your load and make sure you do not exceed the load rating of the crane or any other system component.
- Keep the load hook centered over the load. Avoid side pulls which may damage the crane or injure the operator if the load tips.
- Lock the rear casters of the base to prevent movement during lifting.

Operating Guidelines

The Wheel Base by OZ Lifting Products, LLC® has a maximum operating load rating based on the capacity of crane mounted to it.

The Wheel Base by OZ Lifting Products, LLC® is capable of generating forces that are in excess of this maximum load rating, but this should not be attempted.

NOTE: It is the responsibility of the user to ensure that the loads being handled are within the operating limits of the Wheel Base by OZ Lifting Products, LLC® at all times. Shock loads must be minimized as they can lead to higher forces than the rated capacity of the Wheel Base by OZ Lifting Products, LLC®.

A load rating table is provided in the OZ Lifting Products, LLC® davit crane manual and on the OZ Lifting Products, LLC® davit crane itself. This load rating table is calculated based on both the extension of the crane's boom as well as the amount of cable spooled onto the winch drum. The amount of cable spooled onto the winch will change during a lift (especially long lifts), impacting load capacity.

This Wheel Base by OZ Lifting Products, LLC® has a main structure made from steel. At no time should the crane emit any abnormal noises during use. Any abnormal sounds are cause for removal of load and inspection. There are multiple sources for abnormal noises including, but not limited to:

- If the cable is not spooled neatly, under tension, when load is applied.
- If the crane is severely overloaded.
- If the crane has suffered severe damage from abuse and/or mishandling.

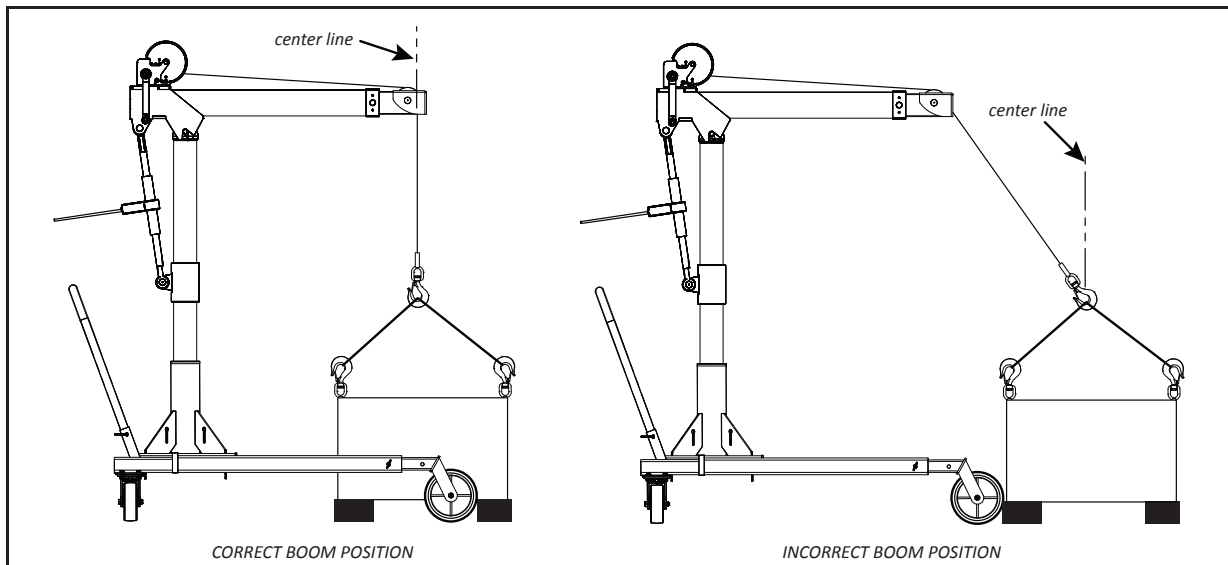


Figure 10

NOTE: This list is not exhaustive and does not cover all possibilities.

Attaching The Load

Please refer to your crane Operator's Manual for assembly of the crane.

Moving The Load

1. Make sure the load is securely attached and balanced before lifting the load slowly and smoothly.
2. Unlock the rear caster wheels at the rear of the Wheel Base.
3. Make sure the load is secured close to the floor and tied off to the mast and the legs to prevent it from swinging.

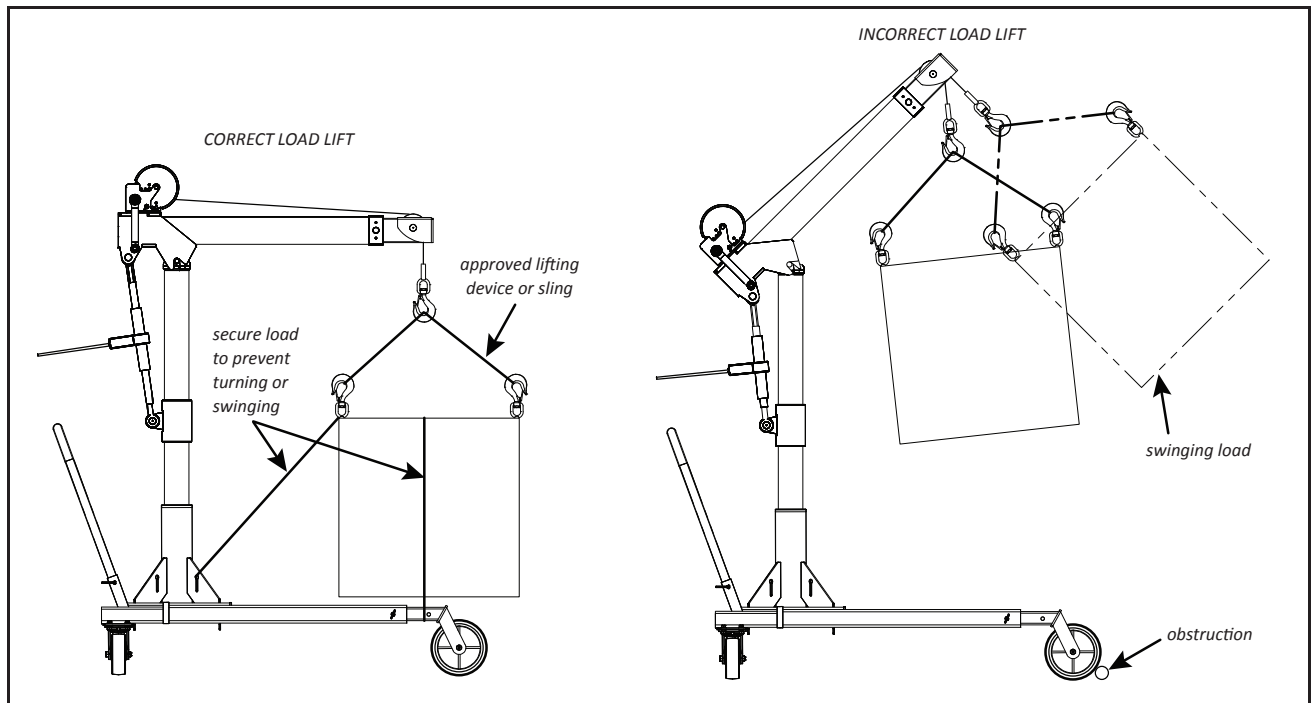


Figure 11



WARNING

Always move the load slowly and smoothly, especially when making turns.

4. Slowly and smoothly pull/push the handle of the Wheel Base to move the load.
5. Do not use powered devices to push or pull the Wheel Base. Always move it by hand.

SPECIFICATIONS

Figure 1

OZWB Davit Crane Reach

Sections are representative of hook reach in 360-degree rotation.

Dimensional values are provided in inches. Bracketed values [] within diagram represent equivalent measurements in millimeters for informational purposes only.

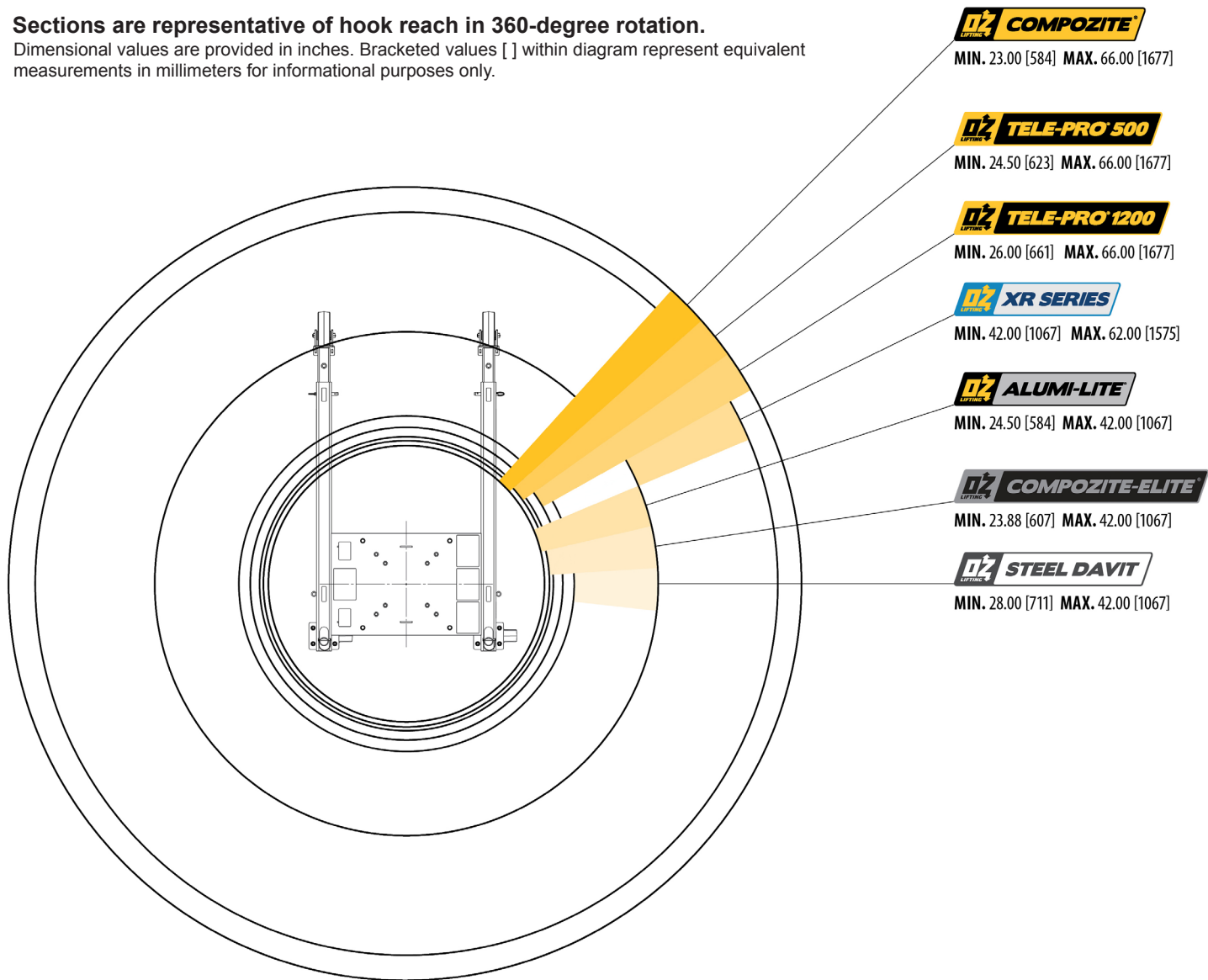
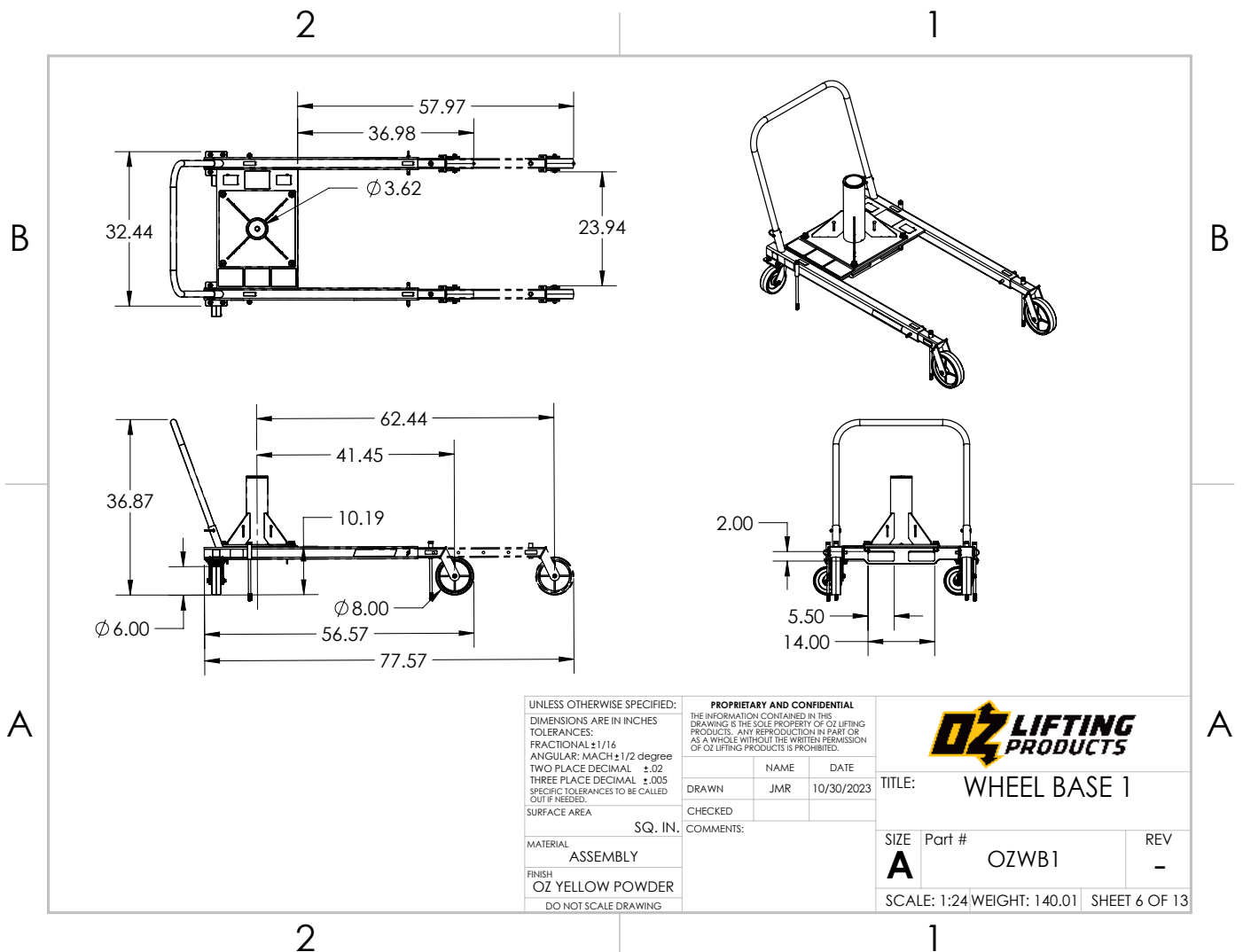


Figure 2



SPECIFICATIONS

Figure 3

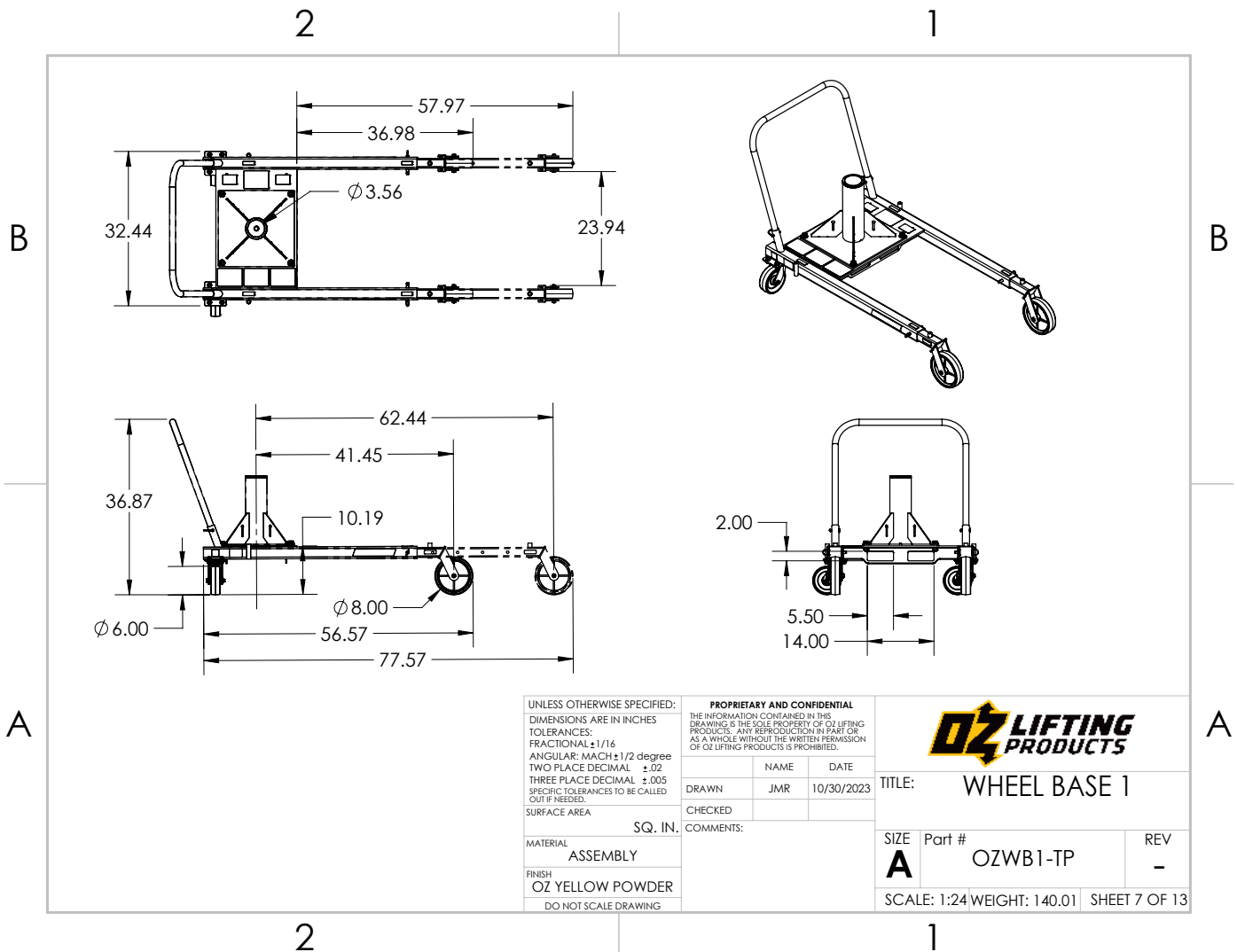
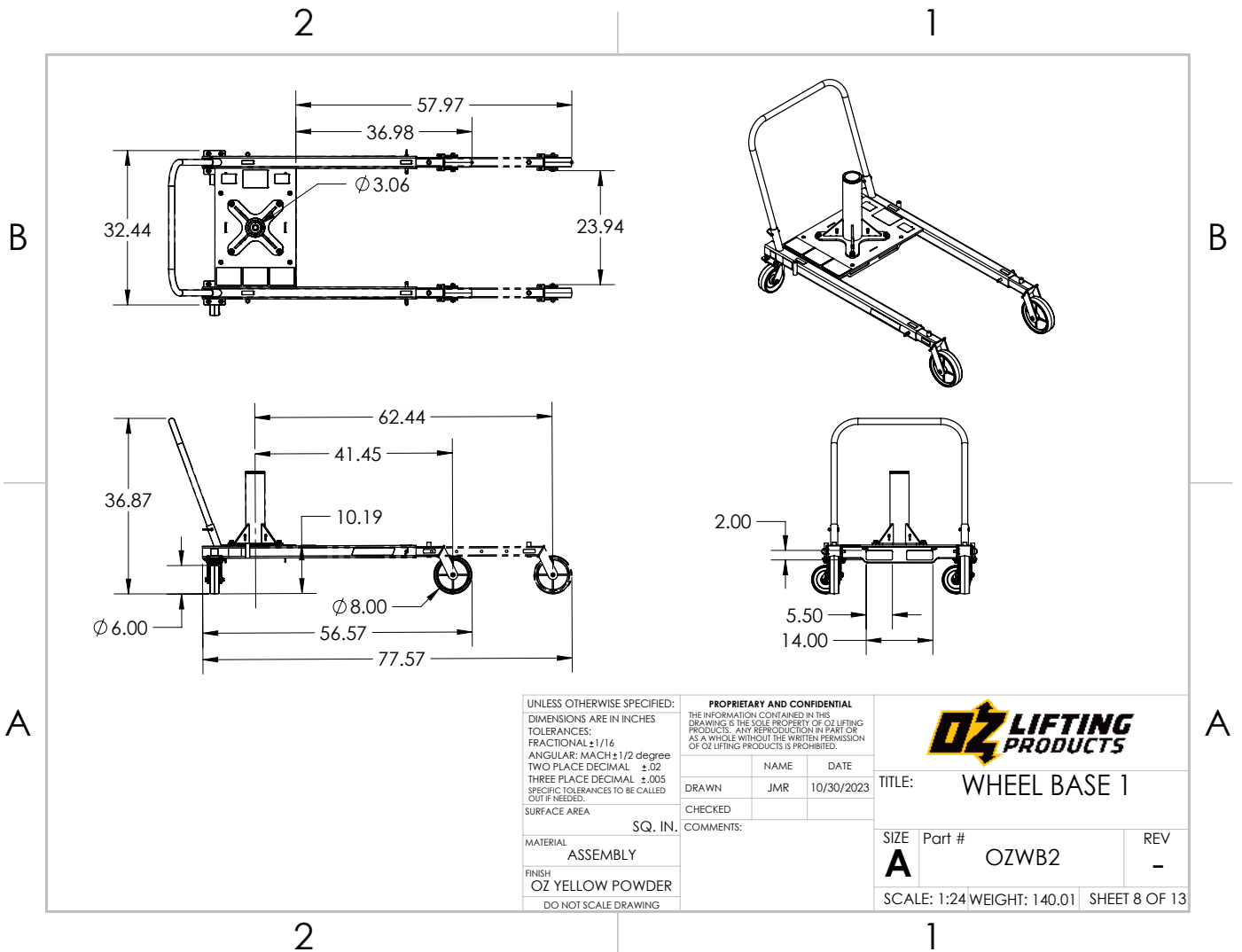
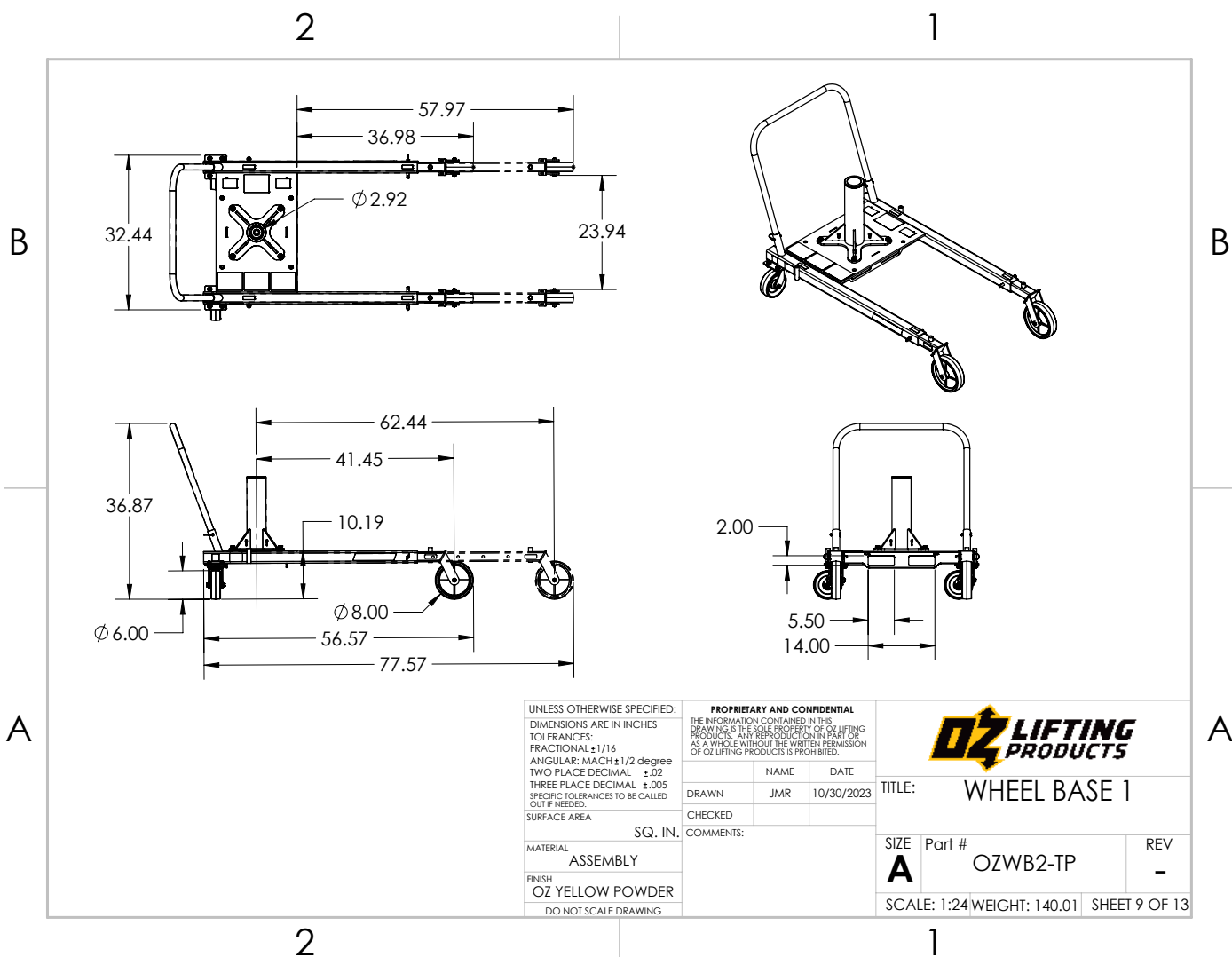


Figure 4



SPECIFICATIONS

Figure 5



MAINTENANCE

Maintenance Safety

WARNING

Instructions are necessary before operating or servicing OZ Lifting Products, LLC®. Read and understand the Operation & Maintenance Manual. Follow warnings and instructions in the manual when making repairs, adjustments or servicing. Check for proper operation after adjustments, repairs or service. Untrained operators and failure to follow instructions can cause injury or death.

Read and understand the OZ Lifting Products, LLC® Operator's Manual.

Replace any components that are worn or damaged.

WARNING

Improper maintenance can cause damage or failure of the machine. Possibly causing property damage and / or severe injury or death to nearby individuals.

Do not drill, weld or modify OZ Lifting Products, LLC® components.

CAUTION

Do not drill, weld or modify OZ Lifting Products, LLC® components. Any modifications will void the warranty.

Lubrication

General Lubrication Guide

Some components are minimum maintenance and do not require service. Follow the chart for the components that require set service lubrication intervals.

Component(s)	Maintenance Task	Lubrication Type	Recommended Lubricant	Interval
Sliding Parts	Lubricate The Sliding Parts	Grease	Standard Grease	160 Hours
Load Sheave Bushing	Apply Light Coat Of Grease	Grease	Standard Grease	320 Hours
Winch Shaft Bearing	Apply Light Coat Of Grease (Do Not Get Grease On The Brake Pads)	Grease	Standard Grease	320 Hours
Front Wheel Axles	Apply Grease Through Zerk Fitting	Grease	Standard Grease	320 Hours

Cleaning

The Wheel Base by OZ Lifting Products, LLC® should be periodically cleaned to preserve its appearance and to prevent corrosion. The Wheel Base by OZ Lifting Products, LLC® will last longer and perform better when it is kept clean and lubricated.

NOTE: No solvents should be used on any parts of the Wheel Base by OZ Lifting Products, LLC® for cleaning or any other purpose.



CAUTION

The frame and component finishes are not warranted if equipment is installed in a wet environment or exposed to harsh cleaners or high-pressure wash downs.

Light Wash Down

Wipe the surfaces of the crane with a wet cloth. Detergents are not necessary. The steel surfaces should have a light film of oil applied to them to prevent corrosion. Remove any excess oil with a clean cloth.

NOTE: No lubricants of any kind should be applied to the brakes in the winch. If the brake pads get contaminated with oil, they may slip.

Inspecting The Wheel Base

In order to maintain quality operation of the product, a regular inspection schedule should be followed by each operator. All inspections should be reported and maintained in a dated record log. These records should be available to all personnel involved with the product and should be made available to OZ Lifting Products LLC® when a warranty issue is in question.

Definitions

Designated Person - The person who is selected or assigned as being competent to perform specific duties.

Qualified Person - The person that—by possession of a recognized degree or certificate of professional standing, or through extensive knowledge, training, and experience—has successfully demonstrated they are able to resolve problems relating to the subject matter and work.

Normal Service - Service that involves operation with randomly distributed loads within the rated load limit, or uniform loads less than 65% of rated load for not more than 15% of the time.

Heavy Service - Service that involves operation within the rated load limit and exceeds normal service.

Severe Service - Service that involves normal or heavy service with abnormal operating conditions. This also includes service that involves shock loading.

Inspection Classifications

Frequent Inspections - Completed by the operator or designated person. Performed by doing a visual examination and listening for unusual sounds during operation. These inspections are usually performed before each operation, every few hours during operation, and if problems arise.

Periodic Inspections - Completed by a designated person. Performed, with more detail than a frequent inspection, by doing visual examinations of internal and external conditions. These inspections are done on the following schedule:

- Normal Service - Semi-annually
- Heavy Service - Quarterly
- Severe Service - Immediately after completion of lift
- Following prolonged storage or if operation issues arise

NOTE: *Label crane as “Out of Service” if an inspection deems it damaged or if maintenance is required. Do not remove this label until a qualified person has resolved the issue. Discontinue use of wire rope and equipment if damage or overloading occurs.*

Important Inspection Notes

- Brake winches require more than audible and visual inspection. Check brake winches daily by operating the crane with and without a load and by stopping at various positions to ensure safe operation. If the load coasts or creeps, contact the factory for friction disc replacements.
- Proper inspection may require disassembly of some parts. Contact the OZ Lifting Products, LLC® factory before doing so or the applicable warranty may be voided.
- For wire rope inspections, please contact the specific manufacturer of the rope. The inspection provided in the following chart is for a general inspection only and is in no way the complete inspection required.
- Before operation, assure all deficiencies on the inspection chart are resolved and inspections are up to date. Refer to the troubleshooting chart for further assistance.
- Be aware of applicable codes and regulations for crane inspection.
- See specific winch owner’s manual for instructions and complete inspection instructions.

General Inspection Chart

NOTE: *Disassemble crane, including boom and winch, periodically to inspect each for damage. Use the following chart to determine what type of inspection is necessary. Frequent Inspection (F) and Periodic Inspection (P).*

Location	Check For	F	P
Wheel Base	Damage, cracks, rust, chipping, dents excess wear, or corrosion.	X	
	Unusual sounds	X	
	Smooth load movements	X	
	Equipment properly lubricated	X	
	Signs of overloading (cracks, dents, or damage)		X
	Proper function when operated with a load equal to the load rating		X
Foundation	Good condition/supports the crane under all conditions	X	
	Level, no swerving of boom	X	
	Cracks, corrosion, damage (check by removing crane base from foundation)		X
Fasteners (including mounting fasteners)	Firmly installed	X	
	Properly tightened	X	
	Stripped threads, bent, or damage (check by removing crane from foundation)		X
Handle	Rotates freely in both directions	X	

NOTE: *Please refer to the winch Operator's Manual for the winch inspection chart.*

Repairs

All repairs must have factory authorization. Contact OZ Lifting Products, LLC® to prevent voiding of the two-year limited warranty and potential damage. Perform recommended inspections to identify which parts should be replaced. Only use OZ Lifting Products, LLC® replacement parts. To order replacement parts, contact your local OZ Lifting Products, LLC® dealer. Please have the serial number, part number and a description available when calling.

TROUBLESHOOTING CHART



WARNING

Instructions are necessary before operating or servicing the equipment. Read and understand the Operator's Manual and the decals. Follow warnings and instructions in the manual when making repairs, adjustments or servicing. Check for correct function after adjustments, repairs or service. Untrained operators and failure to follow instructions can cause injury or death.

PROBLEM	POSSIBLE CAUSE	CORRECTION
Brake distance too long	Discs are worn, damaged, or over lubricated	Replace
	Disc brake ratchet pawl damaged or worn	Replace
Excess wear on gears or bearings	Overloaded	Reduce load
	Improper lubrication	Lubricate
High-pitched squeak	Improper lubrication	Lubricate
Grinding noise	Poorly spooled cable, cable diving into drum	Re-spool cable evenly under tension
	Dirty brakes or gears	Clean
	Broken gears or bearings	Replace
Rattling noise	Loose bolts, screws, fasteners	Tighten hardware
Boom turns on its own	Foundation not level or not secure	Repair
	Mast bent or damaged	Repair
Boom bounces	Overloaded	Reduce load and inspect crane for damage
	Loose mounting bolts	Tighten to correct torque
	Foundation not level or not secure	Repair
	Winch gears worn or damaged	Repair
	Sheave worn or damaged	Repair

Contact OZ Lifting Products, LLC® if disassembly of the crane is required. The two-year limited warranty will be voided if this is not done.

OZ LIFTING PRODUCTS TWO YEAR WARRANTY

OZ Lifting Products, LLC® guarantees this product to be free of defects in materials and workmanship for two years from the date of shipment.

This Warranty Does NOT Cover:

This warranty does not apply to products that show signs of misuse, overloading, alteration, improper maintenance or negligence. The normal wear and tear of moving parts is excluded from the warranty. Moving parts are defined as brake discs, wire rope and other wear components that are subject to use conditions. This warranty does not cover any costs related to removal of this product, lost time, or any other incidental or consequential damages/costs resulting from the claimed defects.

Warranty Disclaimers/Limitations:

If this product fails during the first two years of operating due to defective materials or workmanship, it will be repaired or replaced at the discretion of OZ Lifting Products, LLC®.

Any product subject to a warranty claim must be returned, prepaid, to an authorized OZ Lifting Products, LLC® warranty depot along with proof of purchase. Upon repair, the product will be returned to the customer free of charge. If no defect is found, the customer will be responsible for return shipping costs. The product's warranty will be effective for the remainder of the original warranty period (two years from shipment date).

It is the operator's responsibility to ensure that the product is used in accordance with all applicable local codes, regulations, and safety standards. OZ Lifting Products, LLC assumes no liability for any damages or injuries resulting from the improper use of the product.

OZ Lifting Products, LLC® will not be held liable for the following arising from the use of this product: injuries to persons or property, death, incidental, consequential, or contingent damages, whether negligent or deliberate. It is the sole responsibility of the owner to install and operate the product properly and safely.

This is OZ Lifting Products, LLC®'s only written warranty. This warranty is in lieu of all other warranties implied by law such as merchantability and fitness. The sale of products from OZ Lifting Products, LLC® under any other warranty or guarantee, expressed or implied, is not authorized.

NOTE: OZ Lifting Products, LLC® has the right to alter the design of or discontinue the production of any product without prior notice.

For more information please contact:



P.O. Box 845, Winona, MN 55987

Phone: (800) 749-1064 • (507) 474-6250

Tech Support: (507) 457-3346 • Fax: (507) 452-5217

sales@ozliftingproducts.com • www.ozliftingproducts.com



MAINTENANCE RECORD

MODEL NO. _____

SERIAL NO. _____

[illegible][illegible]



P.O. Box 845, Winona, MN 55987
Phone (800) 749-1064
(507) 474-6250
Tech Support (507) 457-3346
Fax (507) 452-5217
sales@ozliftingproducts.com
www.ozliftingproducts.com



SCAN TO ACCESS TRANSLATED VERSIONS OF THIS MANUAL ON OUR WEBSITE
ESCANEE PARA ACCEDER A LAS VERSIONES TRADUCIDAS DE ESTE MANUAL EN NUESTRO SITIO WEB
SCANNEZ POUR ACCÉDER AUX VERSIONS TRADUITES DE CE MANUEL SUR NOTRE SITE WEB

